



Sign Accessory

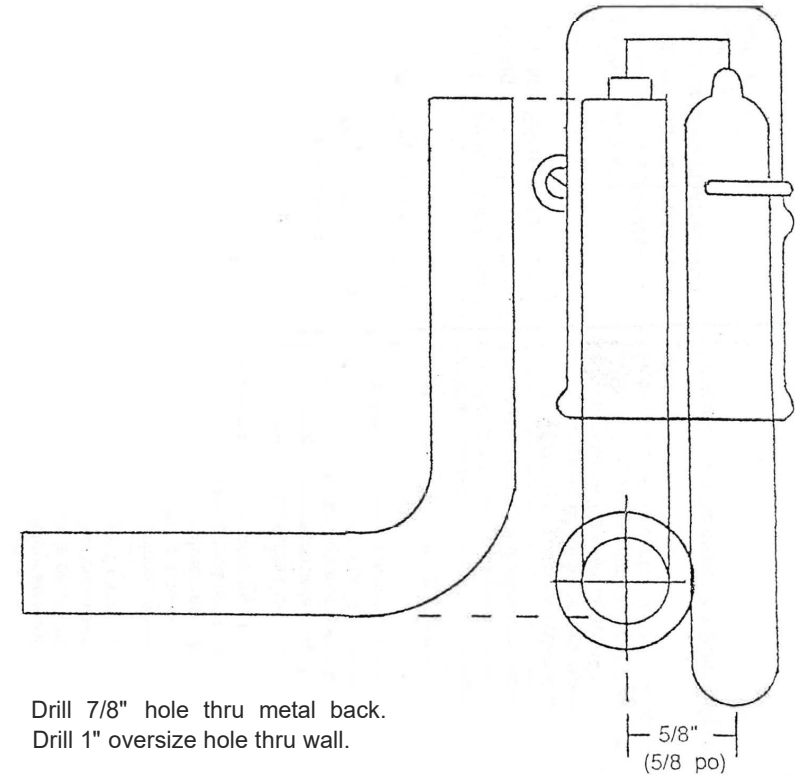
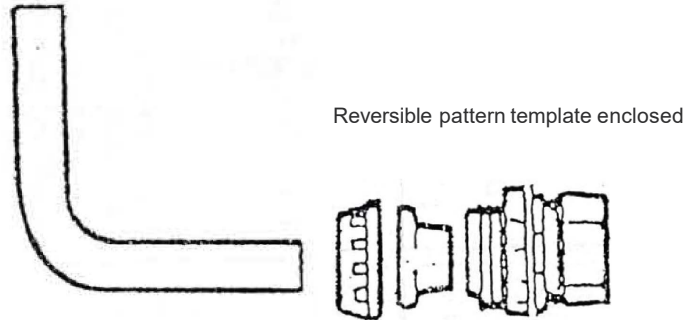
# C.P.A. Conduit Plug Assembly

Note for Pattern Maker: Use enclosed reversible template for proper spacing and alignment of drilling-hole. Additional templates furnished upon request  
TEL: (800) 314-6366, FAX: (619) 462-8381

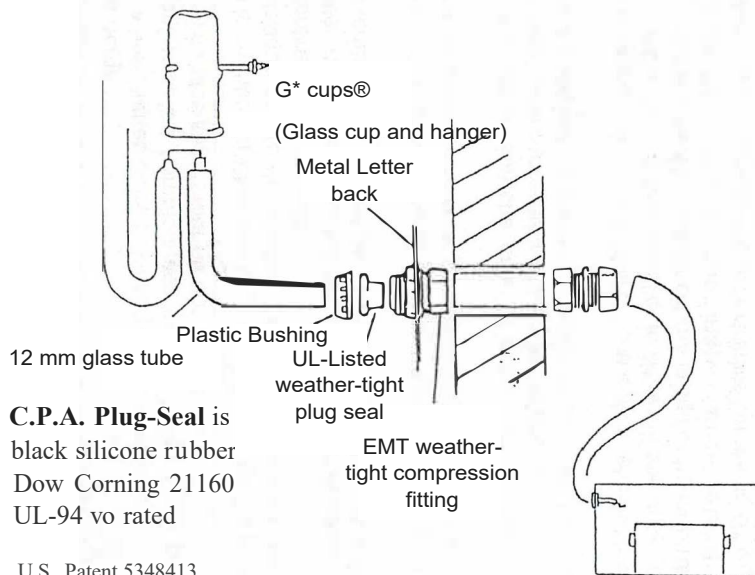
Thru-the-Wall Assembly for neon double-back electrodes

This box contains 25:

- 12 mm Glass Elbows
- Insulating Bushings
- UL-Listed Weather-Tight Plug-Seals
- 1/2" Weather-Tight EMT Connectors



G\* cups<sup>®</sup> sold separately



**C.P.A. Plug-Seal** is black silicone rubber Dow Corning 21160 UL-94 vo rated

U.S. Patent 5348413  
Pat Pend Canada

7500 volts (15,000 volt center mid-point return transformer)

Made in U.S.A.

# INSTALLATION INSTRUCTIONS

## **Procedure #1: Through-the-Wall Double-Back Assembly using C.P.A. in wet locations.**

*Halo-lit letters, open channel letters, plastic-faced letters, complying or listed gas tube systems, surface mounted to wall or raceway.*

1. Insert 1/2" EMT connector into 7/8" hole in sheet metal letter-back. Secure lock-nut to insure required ground path.
2. Add a measured piece of conduit to connector and push through 1" hole in wall and secure letter in place.
3. Slide GTO wire into 90° bent 12mm glass sleeve. Strip enough insulation to make connection to electrode.
4. Insert UL-weather-tight plug seal into connector, screw insulating bushing onto connector. Insert glass sleeve (with GTO already inside) through plug seal/all the way into connector.
5. Install neon tubing. Crimp or twist GTO wire and electrode wire five (5) times. Install G\* cup with hanger in-place. [Suggestion: delete optional O-ring inside G\* cup when using C.P.A.] Fasten hanger to letter back (shim, if necessary), making sure the closed end of cup is at least 45° above horizontal plane. Do not mount in horizontal position.
6. Continue electrical as required.

## **Procedure #2: Double-Back Assembly using C.P.A. in wet locations.**

*Halo-lit letters, open-channel letters, plastic-faced channel letters when mounted directly to raceway.*

1. Connector to be lock-nutted through 7/8" aligning holes in both letter-back and raceway.
2. Fasten letter to raceway. Proceed with Steps 3-6 of Procedure #1.

## **Procedure #3: Through-the-Wall or on Raceway, Double-Back Assembly using C.P.A. when fully protected from rain and snow.**

*Halo-lit letters, open-channel letters, plastic-faced channel letters, complying or listed gas tube systems.*

Same as #1 and #2 Procedures except when fully protected from rain and snow, G\* cups may be installed in any position. Alternate: UL-Listed Flex Connector may be used when fully protected from rain and snow.

## **Procedure #4: Through-the-Wall or on Raceway Double-Back Assembly using C.P.A. on letters manufactured using channel ply or any recognized aluminum-clad plywood.**

1. Over-sized hole in aluminum-clad plywood.
2. Secure connector onto 1/2" to 1" or 1-1/2" Reducer Washer, or onto a piece of 24-GA Sheet Metal with 7/8" hole and fasten to aluminum clad plywood securely to maintain required ground path. Fasten to wall or raceway. Continue with Steps #3-6 of Procedure #1.